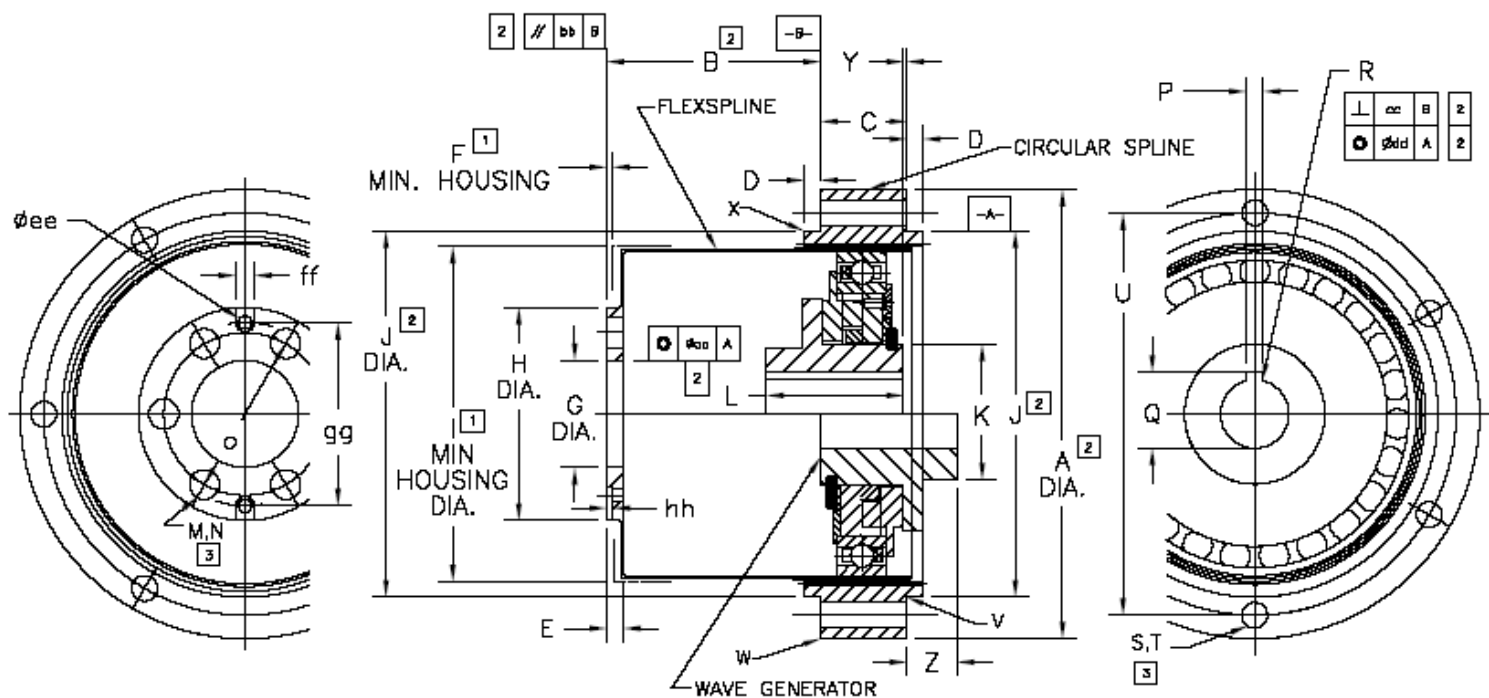


Products

Drawing for N-HDC-E1 (English Version #1)



- 1 DIMENSIONS DENOTE MAXIMUM EXTENT OF ENCROACHMENT OF ADJOINING STRUCTURE.
- 2 DIMENSIONS ESTABLISH INTERFACE AND INSTALLATION REQUIREMENTS. MAINTAIN AT ASSEMBLY AND UNDER ALL OPERATING LOAD CONDITIONS.
- 3 USE ALLOY STEEL SCREWS TORQUE TO MANUFACTURERS MAXIMUM RECOMMENDED VALUE. USE LOCTITE OR OTHER MEANS TO PREVENT LOOSENING.
4. MAINTAINING STANDARD COMPONENTS IN "AS RECEIVED" SETS IS RECOMMENDED.
5. DRAWING IS FOR DIMENSIONAL REVIEW ONLY.
DO NOT SCALE

Dimension Table for N-HDC-E1 (English Version #1)

Dimensions: Inches

	1C	3C	5C	1M	2M	4M	8M	15M
ØA	2.0	2.625	3.28	4.250	5.25	6.63	8.63	10.63
B	.940 ± .015	1.270 ± .015	1.560 ± .015	2.030 ± .015	2.50 ± .020	3.204 ± .025	4.160 ± .035	5.060 ± .040
C	.38	.50	.63	.81	1.00	1.09	1.44	1.88
D	.09	.11	.12	.13	.14	.16	.19	.25
E	.125	.125	.135	.197	.260	.260	.322	.388
F	.08	.04	.08	.08	.11	.06	.10	.12
ØG	.4375 ^{+0.0007} ₋₀	.6255 ^{+0.0005} ₋₀	.7817 ^{+0.0005} ₋₀	1.0631 ^{+0.0006} ₋₀	1.2818 ^{+0.0006} ₋₀	1.6257 ^{+0.0007} ₋₀	2.0945 ^{+0.0008} ₋₀	2.5633 ^{+0.0008} ₋₀
ØH	.830	1.244	1.555	2.000	2.520	3.125	4.055	5.000
ØI	1.47	2.06	2.58	3.33	4.12	5.15	6.67	8.24
ØJ	1.5000 ⁺⁰ _{-.0012}	2.1410 ⁺⁰ _{-.0012}	2.6723 ⁺⁰ _{-.0025}	3.5005 ⁺⁰ _{-.0012}	4.2818 ⁺⁰ _{-.0013}	5.3445 ⁺⁰ _{-.0028}	6.9539 ⁺⁰ _{-.0029}	8.5634 ⁺⁰ _{-.0032}
ØK	.551	.826	1.023 ⁺⁰ _{-.001}	1.023 ⁺⁰ _{-.001}	1.260 ⁺⁰ _{-.001}	1.260 ⁺⁰ _{-.002}	1.890 ⁺⁰ _{-.002}	2.165 ^{+0.002} _{-.002}
L	.63	.750 ⁺⁰ _{-.010}	1.000 ⁺⁰ _{-.010}	1.000 ⁺⁰ _{-.010}	1.500 ⁺⁰ _{-.010}	1.500 ⁺⁰ _{-.010}	1.875 ⁺⁰ _{-.010}	2.437 ⁺⁰ _{-.010}
M	6	6	6	6	6	6	6	6
ØN	.125 ^{+0.010} _{-.002}	.187 ^{+0.010} _{-.002}	.218 ^{+0.010} _{-.002}	.343 ^{+0.010} _{-.002}	.406 ^{+0.010} _{-.002}	.406 ^{+0.010} _{-.002}	.531 ^{+0.010} _{-.002}	.781 ^{+0.010} _{-.002}
ØO	.656	.937	1.187	1.531	1.875	2.312	3.062	3.750
P	.062 PIN	.0937 ^{+0.002} ₋₀	.125 ^{+0.002} ₋₀	.125 ^{+0.002} ₋₀	.1875 ^{+0.002} ₋₀	.1875 ^{+0.002} ₋₀	.1875 ^{+0.002} ₋₀	.250 ^{+0.002} ₋₀
Q	NA	.415 ^{+0.015} ₋₀	.555 ^{+0.015} ₋₀	.555 ^{+0.015} ₋₀	.710 ^{+0.010} ₋₀	.710 ^{+0.015} ₋₀	.959 ^{+0.015} ₋₀	1.236 ^{+0.015} ₋₀
ØR	.250 ^{+0.001} ₋₀	.3750 ^{+0.0004} ₋₀	.5000 ^{+0.0004} ₋₀	.5000 ^{+0.0004} ₋₀	.6250 ^{+0.0005} ₋₀	.6250 ^{+0.0005} ₋₀	.8750 ^{+0.0005} ₋₀	1.1250 ^{+0.0006} ₋₀
S	6	6	6	6	6	6	6	8
ØT	.125 ^{+0.003} _{-.002}	.147 ^{+0.003} _{-.002}	.187 ^{+0.010} _{-.002}	.218 ^{+0.010} _{-.002}	.281 ^{+0.010} _{-.002}	.406 ^{+0.010} _{-.002}	.468 ^{+0.010} _{-.002}	.468 ^{+0.010} _{-.002}
ØU	1.75	2.375	2.937	3.812	4.687	5.875	7.625	9.500
V	.005R MAX.	.005R MAX.	.005R MAX.	.005R MAX.	.005R MAX.	.005R MAX.	.005R MAX.	.005R MAX.
W	.016	.016	.015	.015	.015	.015	.015	.015
X	.016	.016	.015	.015	.015	.015	.015	.015
Y	.005 ⁺⁰ _{-.010}	.028	.067	.099	.075	.047	.105	.088
Z	NA	.242	.361	.211	.569	.448	.562	.787
aa	.002 T.I.R.	.0017 T.I.R.	.0018 T.I.R.	.0019 T.I.R.	.0024 T.I.R.	.0026 T.I.R.	.0027 T.I.R.	.0035 T.I.R.
bb	.001	.0011	.001	.0017	.0019	.0024	.0027	.003
cc	.001	.002	.002	.002	.002	.002	.002	.002
dd	.004 T.I.R.	.0017 T.I.R.	.0018 T.I.R.	.0019 T.I.R.	.0024 T.I.R.	.0026 T.I.R.	.0027 T.I.R.	.0035 T.I.R.
ee	.098	.116	.116	.125	.135	.236	.236	.236
ff	.105	.116	.116	.125	.135	.236	.236	.236
gg	.656	.937	1.343	1.687	2.207	2.312	3.062	3.750
hh	.05	.05	.05	.05	.05	.05	.05	.05