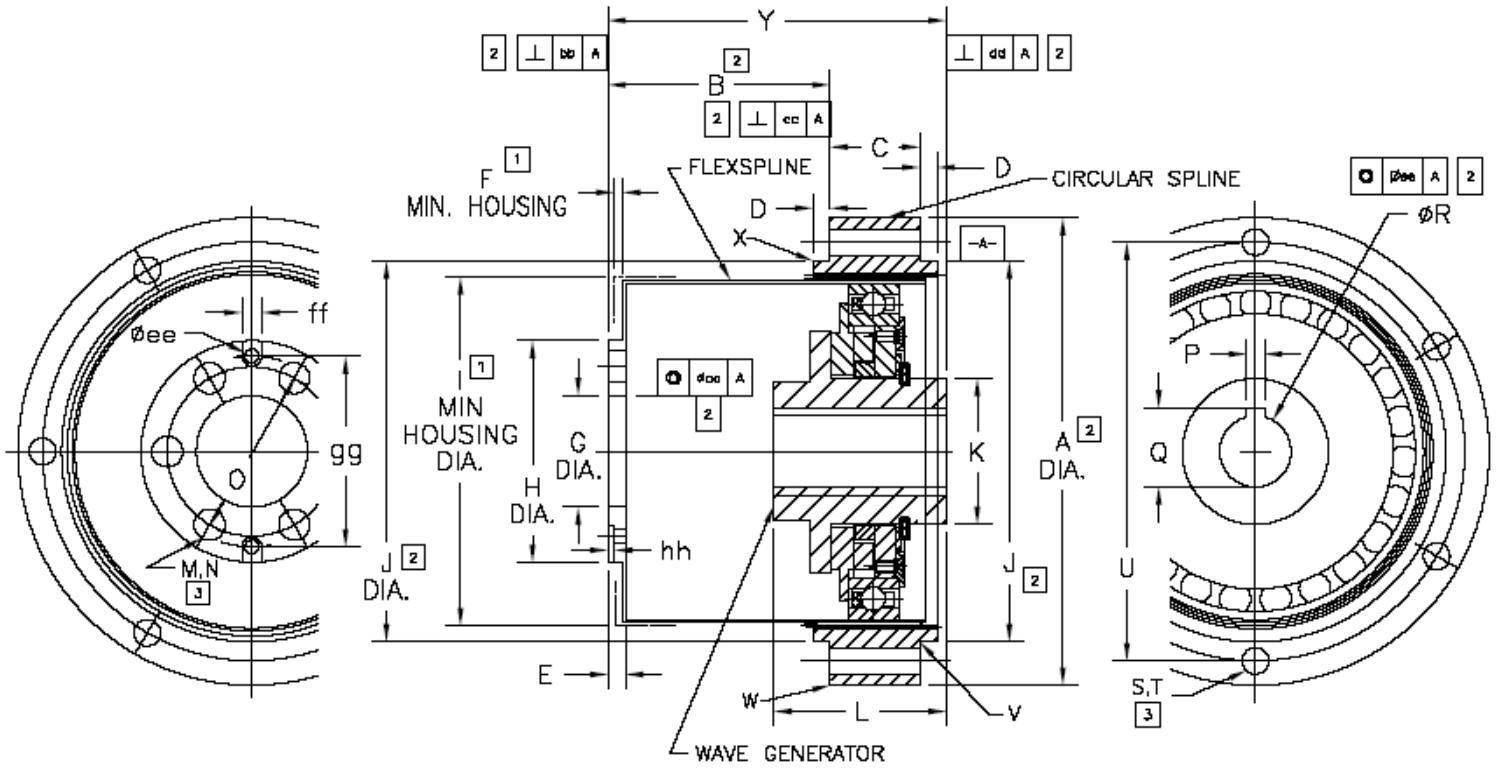


Drawing for N-HDC-M1 (Metric Version)



- 1 DIMENSIONS DENOTE MAXIMUM EXTENT OF ENCROACHMENT OF ADJOINING STRUCTURE.
- 2 DIMENSIONS ESTABLISH INTERFACE AND INSTALLATION REQUIREMENTS. MAINTAIN AT ASSEMBLY AND UNDER ALL OPERATING LOAD CONDITIONS.
- 3 USE ALLOY STEEL SCREWS TORQUE TO MANUFACTURES MAXIMUM RECOMMENDED VALUE. USE LOCTITE OR OTHER MEANS TO PREVENT LOOSENING.
- 4. MAINTAINING STANDARD COMPONENTS IN "AS RECEIVED" SETS IS RECOMMENDED.
- 5. DRAWING IS FOR DIMENSIONAL REVIEW ONLY. ****DO NOT SCALE****

Dimension Table for N-HDC-M1 (Metric Version)

Dimensions: mm

	20	25	32	40	50	65	80	100
ØA	70 ⁺⁰ / _{-.019}	85 ⁺⁰ / _{-.022}	110 ⁺⁰ / _{-.022}	135 ⁺⁰ / _{-.025}	170 ⁺⁰ / _{-.025}	215 ⁺⁰ / _{-.029}	265 ⁺⁰ / _{-.029}	330 ⁺⁰ / _{-.036}
B	31.3 ± .3	40.3 ± .3	52.3 ± .3	63.3 ± .3	80.3 ± .3	100.3 ± .3	119.3 ± .3	153.5 ± .5
C	14	16	20	25	30	40	50	60
D	3	3	3	4	4	5	6	6
E	5.4	6.5	8.6	9.5	13.0	16.3	14.6	18
F	2	2	2	3	3	4	5	6
ØG	16 ^{+0.011} / ₋₀	20 ^{+0.013} / ₋₀	26 ^{+0.013} / ₋₀	32 ^{+0.016} / ₋₀	40 ^{+0.016} / ₋₀	52 ^{+0.019} / ₋₀	65 ^{+0.019} / ₋₀	80 ^{+0.019} / ₋₀
ØH	31.6	39.5	52	64	79	103	126	158
ØI	52.3	65	84.6	104.6	131	169.4	209.3	261
ØJ	54 ⁺⁰ / _{-.019}	67 ⁺⁰ / _{-.019}	90 ⁺⁰ / _{-.022}	110 ⁺⁰ / _{-.022}	135 ⁺⁰ / _{-.025}	177 ⁺⁰ / _{-.025}	218 ⁺⁰ / _{-.029}	272 ⁺⁰ / _{-.032}
ØK	21	26	26	32	32	48	55	65
L	27 ⁺⁰ / _{-.1}	32 ⁺⁰ / _{-.1}	32 ⁺⁰ / _{-.1}	40 ⁺⁰ / _{-.1}	40 ⁺⁰ / _{-.1}	52 ⁺⁰ / _{-.1}	65 ⁺⁰ / _{-.1}	70 ⁺⁰ / _{-.1}
M	6	6	6	6	6	6	12	12
ØN	4.5	5.5	6.6	9	14	14	11	14
ØO	24	30	40	50	60	80	104	130
P	3 ± .0125	4 ± .0150	5 ± .0150	5 ± .0150	6 ± .0150	8 ± .0180	8 ± .0180	8 ± .0180
Q	10.4	12.8	16.3	16.3	21.8	27.3	31.3	31.3
ØR	9 ^{+0.015} / ₋₀	11 ^{+0.018} / ₋₀	14 ^{+0.018} / ₋₀	14 ^{+0.018} / ₋₀	19 ^{+0.021} / ₋₀	24 ^{+0.021} / ₋₀	28 ^{+0.021} / ₋₀	28 ^{+0.021} / ₋₀
S	6	6	6	6	6	6	8	8
ØT	3.5	4.5	5.5	6.6	9	11	11	14
ØU	60	75	100	120	150	195	240	290
V	.3	.3	.3	.3	.3	.3	.3	.3
W	.4	.4	.4	.4	.4	.4	.4	.4
X	.4	.4	.4	.4	.4	.4	.4	.4
Y	51.5 ± .5	63.5 ± .5	77.5 ± .6	95.5 ± .6	116.4 ± .7	146.3 ± .7	177.3 ± .7	220.2 ± .7
aa	.044	.047	.050	.063	.066	.070	.090	.110
bb	.028	.036	.044	.050	.060	.070	.080	.090
cc	.031	.033	.035	.045	.047	.049	.064	.080
dd	.025	.036	.036	.048	.048	.048	.054	.060
ee	.044	.047	.050	.063	.066	.070	.090	.110
ff	2.66	2.94	2.94	3.17	3.94	6	6	6
gg	16.66	23.80	34.11	42.85	56.06	58.72	77.77	95.25
hh	1.27	1.27	1.27	1.27	1.27	1.27	1.27	1.27